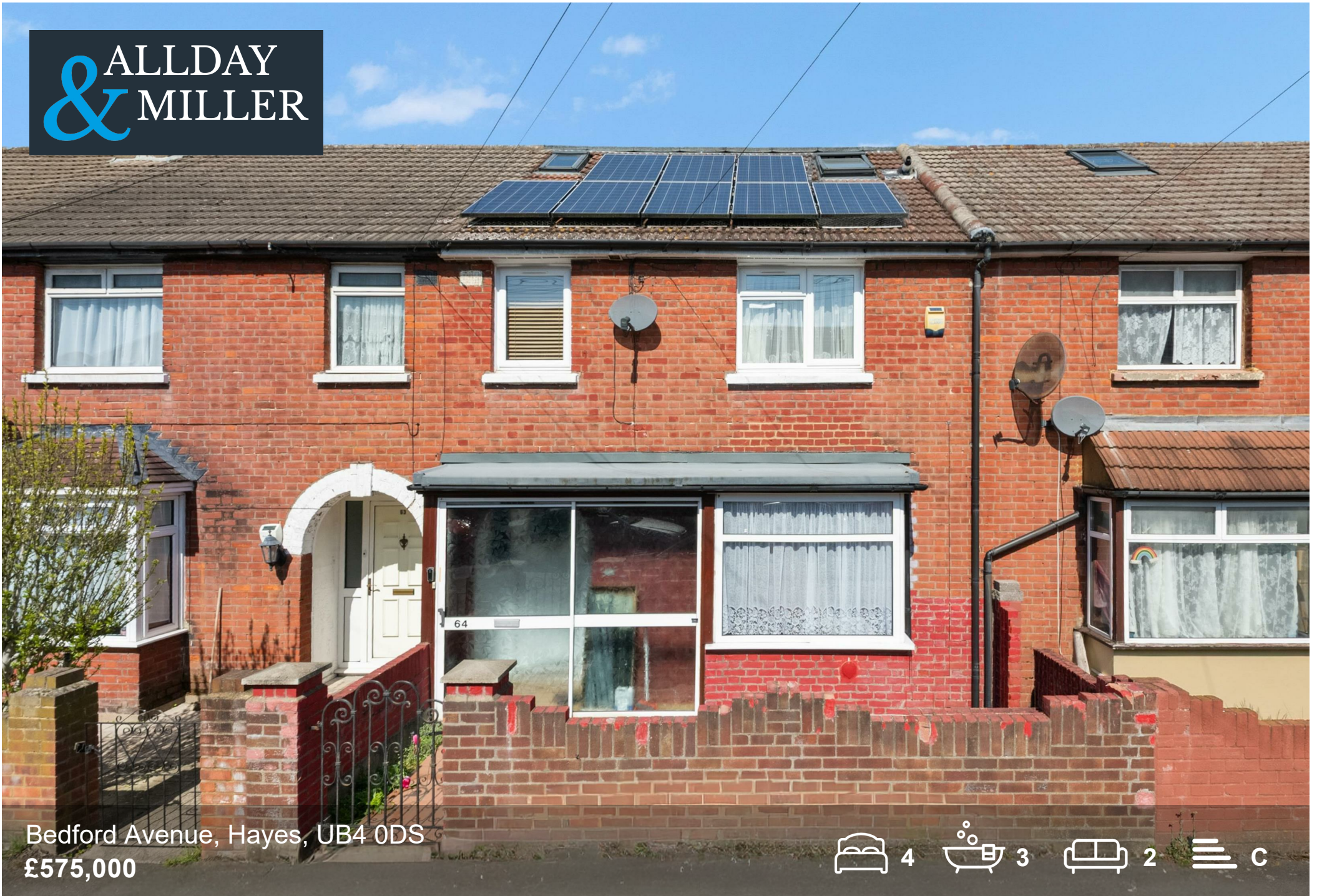


ALLDAY
& MILLER



Bedford Avenue, Hayes, UB4 0DS
£575,000

4 3 2 C



Bedford Avenue, Hayes, UB4 0DS

£575,000

- Four/Five Bedroom Home
- Over 2000 Sq Ft
- Within Close Proximity To Yeading Lane
- Brick Kitchen/Diner Extension
- Large Garage To The Rear Of Garden
- Three Bathrooms (One On Each Floor)
- Incredible Value For Money
- Parking Available
- Further Conservatory Extension
- Approx £2800 - £3000 Rental Income

Description

This generously proportioned property is arranged over three floors and offers flexible accommodation, ideal for families or those seeking ample living space.

The ground floor comprises a reception room, a bedroom, a kitchen, dining room, and a bathroom, providing a versatile layout.

To the first floor, there are three bedrooms along with a family bathroom.

The second floor features an additional bedroom and bathroom.

Externally, the property benefits from a private rear garden, offering outdoor space for relaxation and entertaining.

Situation

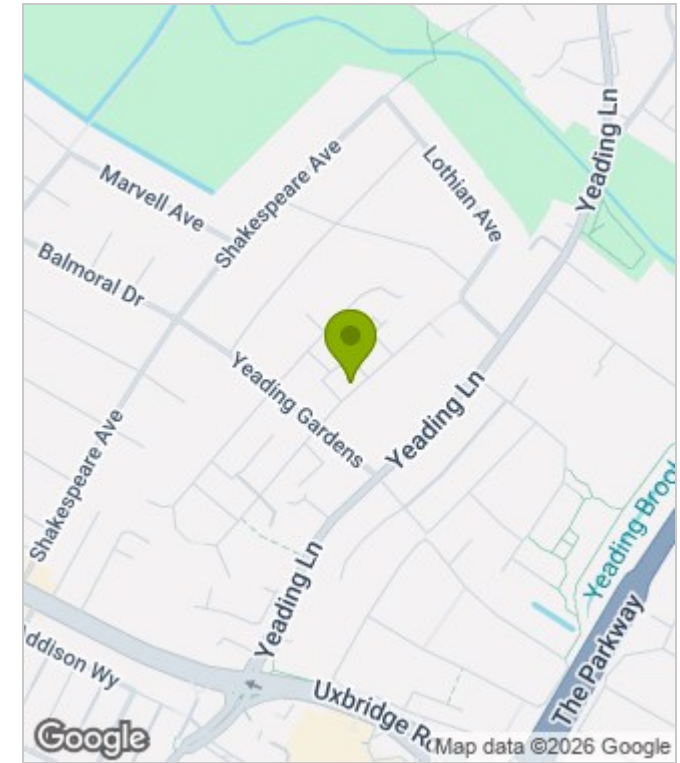
Bedford Avenue a residential cul-de-sac in the heart of North Hayes. With easy access to a variety of local amenities including bus links, the M4/A40 road links (providing access to London and The Home Counties), Heathrow Airport, a number of local shops, restaurants and cafes. The Elizabeth Line runs from Hayes & Harlington Station being just a short drive away making the commute into central London a breeze. A number of local schools including Yeading Primary and Hayes Park primary school also within close proximity.



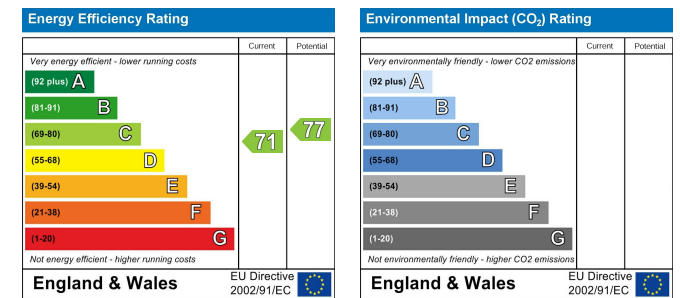
Floor Plans



Area Map



Energy Performance Graph



These particulars, whilst believed to be accurate are set out as a general outline only for guidance and do not constitute any part of an offer or contract. Intending purchasers should not rely on them as statements of representation of fact, but must satisfy themselves by inspection or otherwise as to their accuracy. No person in this firm's employment has the authority to make or give any representation or warranty in respect of the property.